

ZPMC

WQHL系列轻型焊接滑轮

Series WQHL Light Welding Pulley

2013年10月版 Oct, 2013 Edition



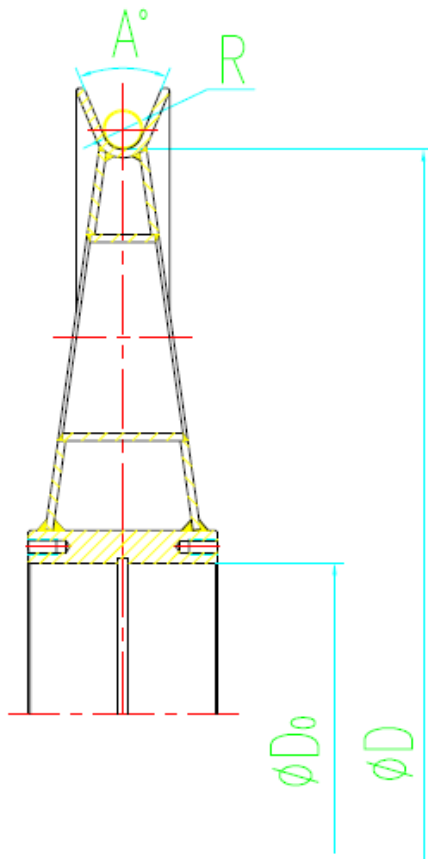
上海振华重工（集团）宁波伟隆传动机械有限公司
ZPMC Ningbo Weilong Transmission Machinery Co., Ltd.



一、WQHL系列焊接滑轮性能及优势

我公司生产的WQHL系列焊接轻型滑轮，滑轮绳槽通过冷加工成形后，再与支承幅板、轴承套焊接而成。滑轮绳槽技术要求符合GB/T3811-1983等标准，可以广泛用于集装箱岸桥、抓斗式卸船机、场桥轮胎吊、轨道吊等各种运行频繁的起重机场合，其突出优点如下：

- ◇重量轻，约为传统的精铸滑轮和热轧滑轮的重量的1/2~1/3；
- ◇转动惯量小，钢丝绳的相对滑移小，减少滑轮与钢丝绳之间的磨损，能有效提高钢丝绳的使用寿命；
- ◇轮槽表面中频淬火，硬度HRC40-50，淬透有效深度大于3mm。
- ◇此滑轮用于运动的部件，如桥吊吊具上架、小车小车平台，减少牵引机构能源消耗。



I、Performance and advantage of Series WQHL Light welding pulley

The design technology of the pulley can reach the requirements of GB/T3811-1983: first cold machining of the pulley groove, then weld to the supporting plate and bearing housing. It can widely used for Container Quayside Crane, Grab Chip Unloader, RTG, RMG, and so on. And it has advantages as follow:

- ◇Light weight, 1/2~1/3 of the traditional precision casting roller and hot-rolling pulley
- ◇Small rotational inertia and relative slippage. So it can help to reduce the abrasion between pulley and wire rope and increase the using life.
- ◇Medium-frequency hardening treatment on groove surface, HRC 40-50, valid depth more than 3mm.
- ◇This pulley is used for moving component to decrease the energy consumption.





二、WQHL系列焊接滑轮订货型号

II、Order type of Series WQHL Light welding pulley

WQHL- D × R A

D:滑轮绳槽底径; R:绳槽半径; A:绳槽角度
 D:Bottom diameter; R:Radius; A:Angle

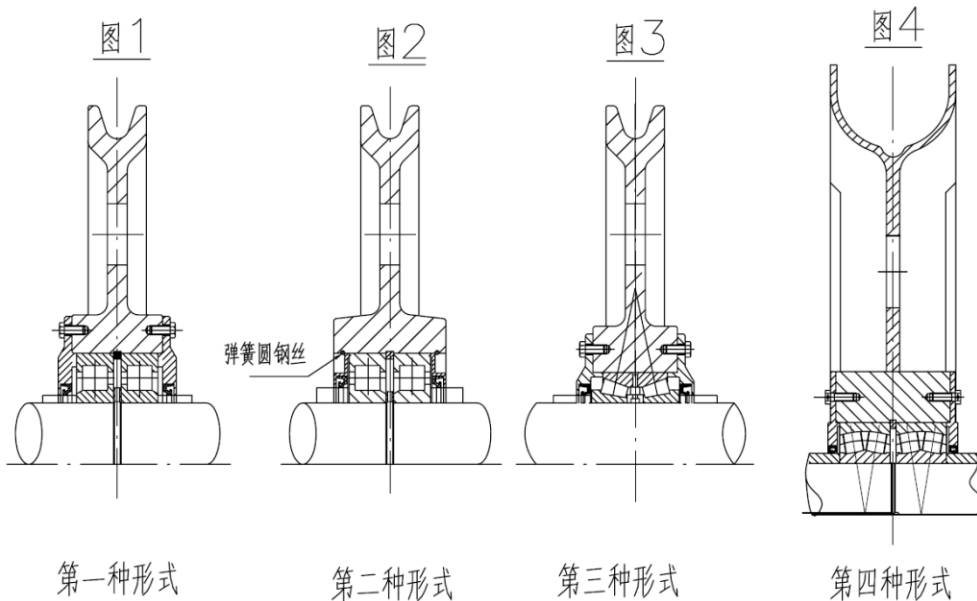
我公司生产WQHL轻型焊接滑轮,可以完全替代现行桥吊、卸船机、场桥起重机械上的各类精铸和热轧滑轮,最大规格最大为φ1600mm,常见规格表:

The series WQHL light welding pulley of our company can totally instead the kinds of the currently precision casting roller and hot-rolling pulley using in crane, ship unloader and so on. The largest scale is φ1600mm, and the normal scales are as follow:

滑轮型号 Type	适用钢丝绳直径d Wire rope diameter	滑轮槽直径D Groove diameter	滑轮内孔直径D5 Inner hole diameter		
			1	2	3
WQHL-12/16×400	12-16	400	125	130	
WQHL-12/16×500	12-16	500	125	130	
WQHL-20/28×650	20-28	650	200		
WQHL-20/28×750	20-28	750	200	230	
WQHL-28/32×560	28-32	560	240		
WQHL-28/32×850	28-32	850	240		
WQHL-28/32×900	28-32	900	240	290	
WQHL-28/32×950	28-32	950	240	290	
WQHL-30/38×700	30-38	700	125		
WQHL-30/38×800	30-38	800	125	270	
WQHL-30/38×900	30-38	900	270	290	
WQHL-30/38×950	30-38	950	270	290	
WQHL-30/38×1000	30-38	1000	290	320	
WQHL-35/40×1100	35-40	1100	360		
WQHL-38/40×1200	38-40	1200	360		
WQHL-40/48×1400	40-48	1400	360		
WQHL-52/54×1600	52-54	1600	360		
WQHL-52/54×1800	52-54	1800	460		
WQHL-52/54×2100	52-54	2100	460		

三、滑轮常见安装形式

III、 Normal installing form



根据轴承选用的不同，滑轮安装主要分为以下四种：

第一种形式：两个单列圆柱滚子轴承，端盖用螺栓固定，常规安装。

第二种形式：两个单列圆柱滚子轴承，端盖用卡簧（或圆钢丝）固定，易拆装。

第三种形式：单个双列圆锥滚子轴承，端盖用螺栓固定，用于轴向力大情况。

第四种形式：两个调心滚子轴承，端盖用螺栓固定主要用于超大滑轮。

According to the different choosing bears, there are four forms:

Form 1: Two single-row cylindrical roller bearing, use bolts to fix cover, normally installed.

Form 2: Two single-row cylindrical roller bearing, use clamp spring or steel wire to fix, easy for dismounting.

Form3: single double-row tapered roller bearing, use bolts to fix cover, using for the condition of large axial force.

Form 4: two self aligning roller bearing, use bolts to fix cover, special design for huge pulley.

上海振华重工（集团）宁波伟隆传动机械有限公司

ZPMC Ningbo Weilong Transmission Machinery Co., Ltd.

地址：中国宁波市东钱湖工业园区莫枝北路505号

电话：(86)574-88372266 83066266

传真：(86)574-88372264 88373712

邮编：315121

公司网站：<http://www.weilongme.com.cn>

电子信箱：weilong@weilongme.com.cn

服务热线：(86)574-88373131 88395022

Addr: 505 Mozhi North Lord, Dongqianhu

Development Zone, Ningbo, China

Tel: (86)574-88372266 83066266

Fax: (86)574-88372264 88373712

P.C.: 315121

Web-site: <http://www.weilongme.com.cn>

E-mail: weilong@weilongme.com.cn

Serve-online: (86)574-88373131 88395022